



COMMERCIAL LIGHTING

NOMA SERIES T8

LED TUBE LIGHT



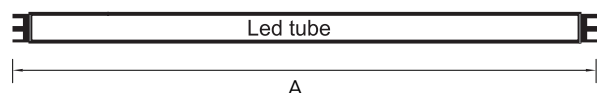
www.rlux.in



PRODUCT DESCRIPTION

RLUX Noma Series T8 LED Tube Light is designed in a way that it can directly replace the traditional T8 fluorescent lighting systems in any commercial or residential space. The product is available in both frosted lens and clear lens delivering an evenly illuminated glow, similar to that of traditional fluorescent tubes. It is also fitted with an internal RLUX driver that works with in-line AC voltage.

PHYSICAL PARAMETERS



Wattage	A (ft)
10 W - 22 W	4

PRODUCT FEATURES

- 150 lm/W, DLC 5.1 Listed.
- Input voltage range: 120-277 V, 50/60 Hz.
- Overpower, short and open circuit protected.
- Double ended construction. Can be wired single ended.
- Reduces energy consumption by up to 60%.
- LED tube light with superior aesthetic & heat dissipation capability.
- Green Eco Friendly: no flickering, no UV light, no buzzing ballast, no hazardous materials.

ORDERING INFORMATION

Part Number	Type	Fixture Size	Dimming	Wattage	CCT	CRI	Diffuser	Internal
5	8	04	Blank/N	YYW	CC	8	C/F	Y

SERIES CODE

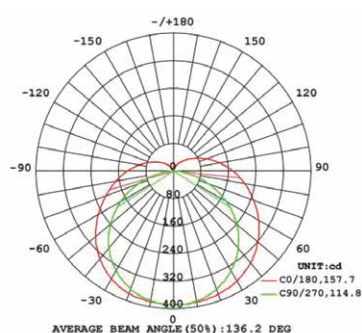
Model Number	Wattage	CCT Optional	CRI	Efficacy	Diffuser Type
5804APNI0WBI508F	10 W	3500 K - 6500 K	80	>150 lm/W	Frosted
5804APNI2WBI508F	12 W	3500 K - 6500 K	80	>150 lm/W	Frosted
5804APNI5WBI508F	15 W	3500 K - 6500 K	80	>150 lm/W	Frosted
5804APNI8WBI508F	18 W	3500 K - 6500 K	80	>150 lm/W	Frosted
5804APN22WBI508F	22 W	3500 K - 6500 K	80	>150 lm/W	Frosted

FIXTURE DETAILS

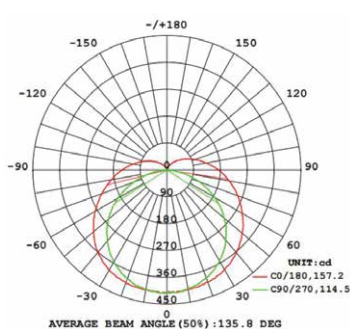
Efficacy	150 lm/W				
Wattage	10 W	12 W	15 W	18 W	22 W
Lumen Output	1500 lm	1800 lm	2250 lm	2700 lm	3300 lm
LED Brand and Package	BRIDGELUX, 2835, 0.2W		BRIDGELUX, 2835, 0.5W		
Number of LEDs	120	120	120	120	120
Operating Temperature	-20° F to +90° F				
IP Rating	IP20				
Power Factor	> 0.9				
Heat Sink Type	Al Extrusion				
PCB Thickness	1 mm				

OPTOMETRIC DATA

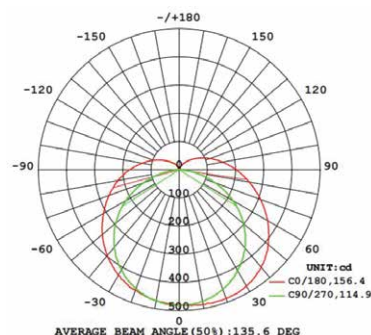
10 W



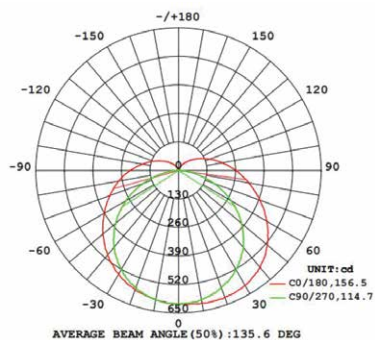
12 W



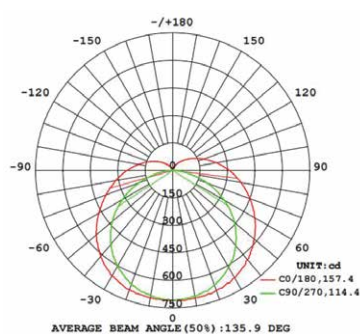
15 W



18 W



22 W



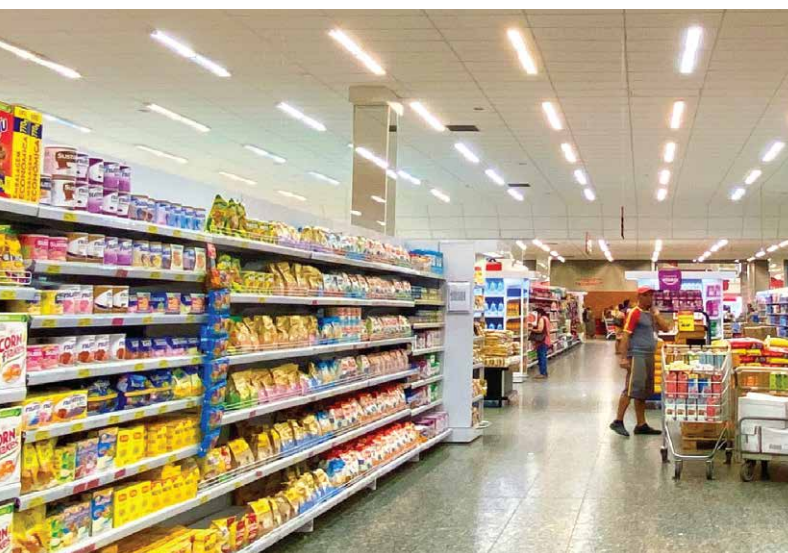
APPLICATION AREAS



SCHOOLS



OFFICES



RETAIL STORES



RESIDENTIAL SPACES



GENERAL AREAS



MALLS